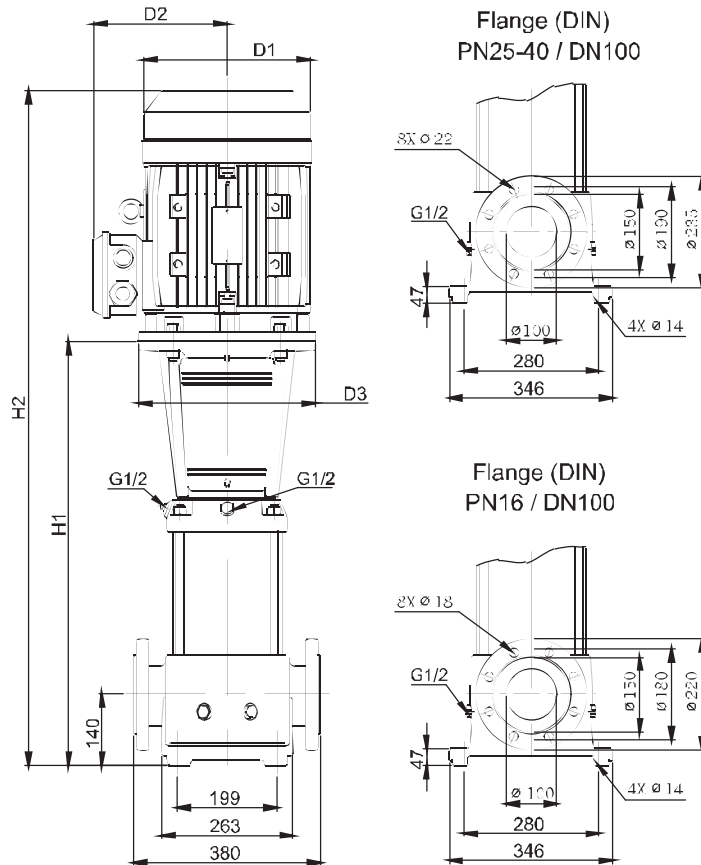




尺寸和重量-SB90



泵浦型號	電機 P ₂ [kW]	SB					淨重 (kg)	
		尺寸 (mm)			D1	D2		D3
		DIN flange		DIN flange				
H1	H2							
SB 90-1-1	5.5	572	932	234	199	300	116.06	
SB 90-1	7.5	572	972	234	199	300	125.08	
SB 90-2-2	11.0	774	1219	268	215	350	163.82	
SB 90-2	15.0	774	1263	268	215	350	174.86	
SB 90-3-2	18.5	866	1401	317	242	350	214.94	
SB 90-3	22.0	866	1445	317	242	350	225.74	
SB 90-4-2	30.0	958	1581	317	290	400	316.08	
SB 90-4	30.0	958	1581	317	290	400	316.12	
SB 90-5-2	37.0	1050	1775	398	365	400	391.48	
SB 90-5	37.0	1050	1775	398	365	400	391.52	
SB 90-6-2	45.0	1142	1867	398	365	450	424.58	
SB 90-6	45.0	1142	1867	398	365	450	424.62	

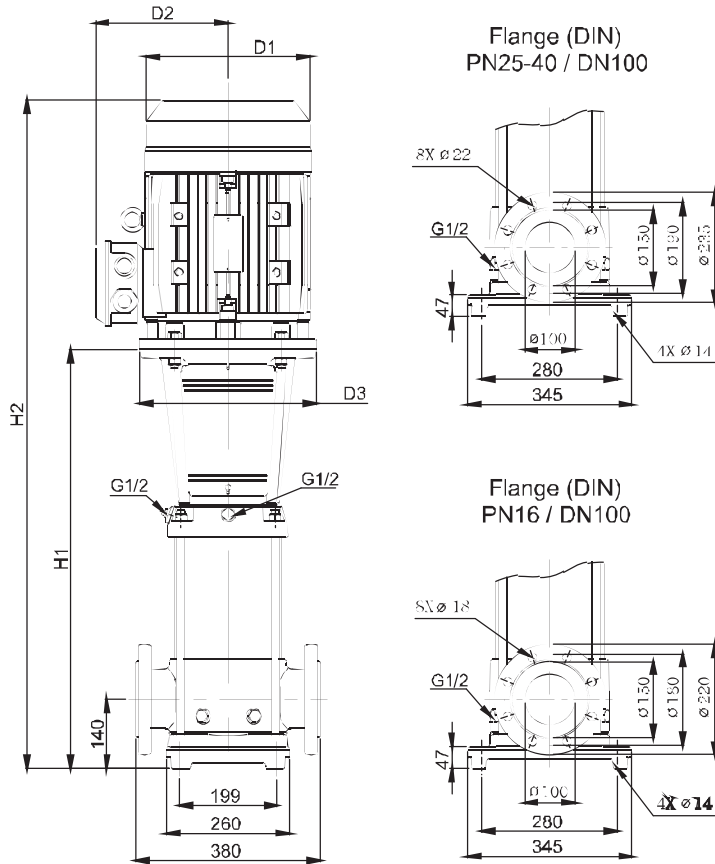
技術數據

Vertical Multistage Centrifugal In-line Pumps



STAIRS PUMPS

尺寸和重量-SBI,SBN90



泵浦型號	電機 P ₂ [kW]	SBI,SBN 尺寸 (mm)					淨重 (kg)
		DIN flange		D1	D2	D3	
		H1	H2				
SBI, SBN 90-1-1	5.5	576	936	234	199	300	106.30
SBI, SBN 90-1	7.5	576	976	234	199	300	115.32
SBI, SBN 90-2-2	11.0	778	1223	268	215	350	153.92
SBI, SBN 90-2	15.0	778	1267	268	215	350	164.96
SBI, SBN 90-3-2	18.5	870	1405	317	242	350	205.00
SBI, SBN 90-3	22.0	870	1449	317	242	350	215.80
SBI, SBN 90-4-2	30.0	962	1585	317	290	400	305.98
SBI, SBN 90-4	30.0	962	1585	317	290	400	306.02
SBI, SBN 90-5-2	37.0	1054	1779	398	365	400	381.82
SBI, SBN 90-5	37.0	1054	1779	398	365	400	381.86
SBI, SBN 90-6-2	45.0	1146	1871	398	365	450	414.66
SBI, SBN 90-6	45.0	1146	1871	398	365	450	414.70